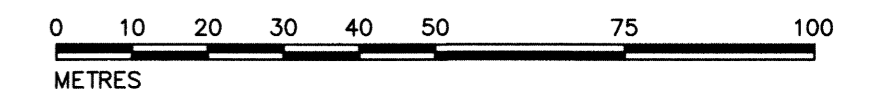


John Moser
JOHN MOSER, M.C.P., R.P.P., GENERAL MANAGER
PLANNING, INFRASTRUCTURE AND ECONOMIC
DEVELOPMENT DEPARTMENT, CITY OF OTTAWA

I CERTIFY THAT THIS PLAN IS REGISTERED
IN THE LAND REGISTRY OFFICE FOR THE
LAND TITLES DIVISION OF
OTTAWA-CARLETON (No.4) AT 12:50
O'CLOCK ON THE 21 DAY OF September
2016 AND ENTERED IN THE PARCEL REGISTER
FOR P.I.N. 04319-2839 -- AND
THE REQUIRED CONSENTS ARE REGISTERED
AS PLAN DOCUMENT No. 061828589.

M. Wasas
LAND REGISTRAR
THIS PLAN COMPRISES PART OF THE LAND
IDENTIFIED BY P.I.N. 04319-2839.

PLAN OF SUBDIVISION OF
PART OF LOT 8
CONCESSION 4
GEOGRAPHIC TOWNSHIP OF OSGOODE
CITY OF OTTAWA
SCALE 1:1000



METRIC
DISTANCES AND COORDINATES SHOWN ON THIS PLAN ARE IN
METRES AND CAN BE CONVERTED TO FEET BY DIVIDING BY 0.3048

DISTANCES SHOWN ON THIS PLAN ARE HORIZONTAL GROUND DISTANCES AND
CAN BE CONVERTED TO GRID DISTANCES BY MULTIPLYING BY THE COMBINED
SCALE FACTOR OF 0.999949

NOTES
BEARINGS HEREON ARE ASTROMOMIC, DERIVED FROM THE BEARING OF
N58°17'30"E AS SHOWN FOR THE SOUTHEASTERLY LIMIT OF LOTS 3 TO 11 ON
REGISTERED PLAN 4M-1151.

- ALL MONUMENTS ARE STANDARD IRON BARS UNLESS OTHERWISE NOTED
- S.I.B. DENOTES 0.025 SQ., 1.2 LONG, STANDARD IRON BAR
 - S.S.I.B. DENOTES 0.025 SQ., 0.6 LONG, SHORT STANDARD IRON BAR
 - I.B. DENOTES 0.016 SQ., 0.6 LONG, IRON BAR
 - DENOTES SURVEY MONUMENT FOUND
 - DENOTES SURVEY MONUMENT PLANTED
 - WIT. DENOTES WITNESS
 - # DENOTES ROUND IRON BAR
 - 671 DENOTES F.H. GOOCH, O.L.S.
 - 725 DENOTES ARNETT, KENNEDY, RIDDELL & JASON LTD.
 - 1116 DENOTES W.J. JOHNSTON, O.L.S.
 - 1287 DENOTES FARLEY, SMITH & MURRAY LTD.
 - 1442 DENOTES J.H. KENNEDY, O.L.S.
 - 1697 DENOTES J.P. SHIPMAN, O.L.S.

POINT IDENTIFICATION	NORTHING	EASTING
ORP A	5011912.88	377360.62
ORP B	5012194.64	377325.10

COORDINATES SHOWN TO RURAL ACCURACY IN ACCORDANCE WITH O.REG 216/10,
SECTIONS 14 AND 31 TO 35 (BOTH INCLUSIVE).
COORDINATES CANNOT, IN THEMSELVES, BE USED TO RE-ESTABLISH
CORNERS OR BOUNDARIES SHOWN ON THIS PLAN

SURVEYOR'S CERTIFICATE

- (1) THIS SURVEY AND PLAN ARE CORRECT AND IN ACCORDANCE WITH THE
SURVEY'S ACT, THE SURVEYORS ACT AND THE LAND TITLES ACT AND THE
REGULATIONS MADE UNDER THEM.
- (2) THE SURVEY WAS COMPLETED ON THE 10TH DAY OF JUNE, 2016.

JULY 5, 2016
DATE

J.P. Shipman
J.P. SHIPMAN
ONTARIO LAND SURVEYOR

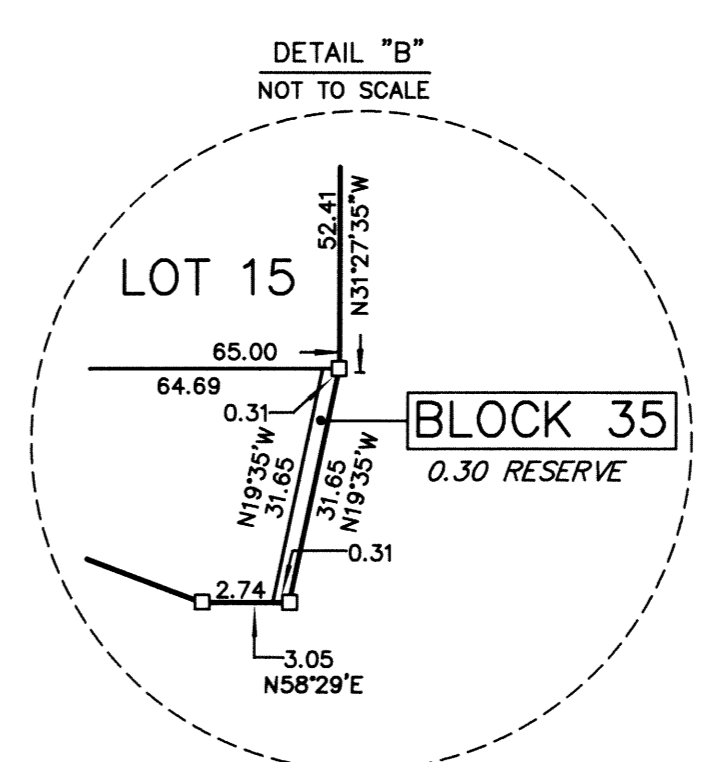
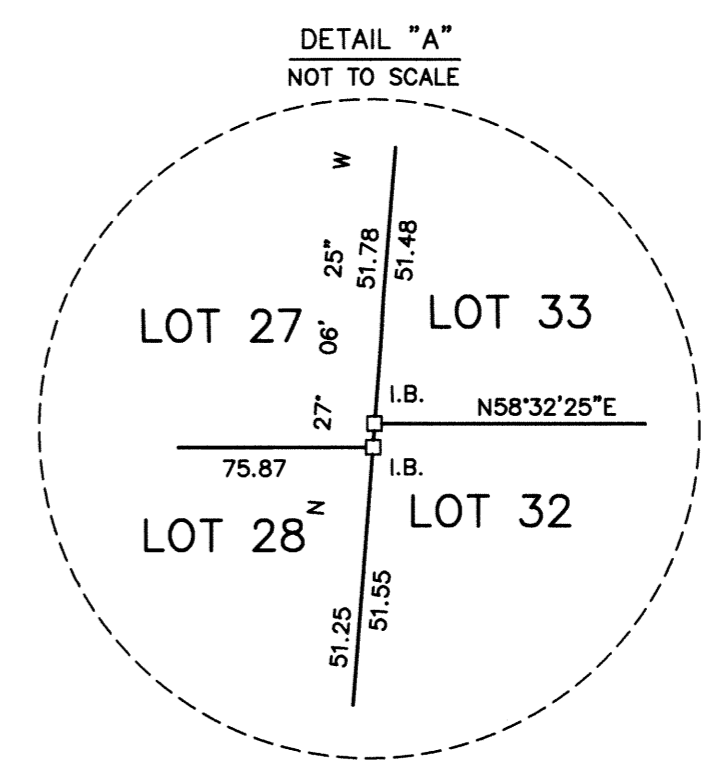
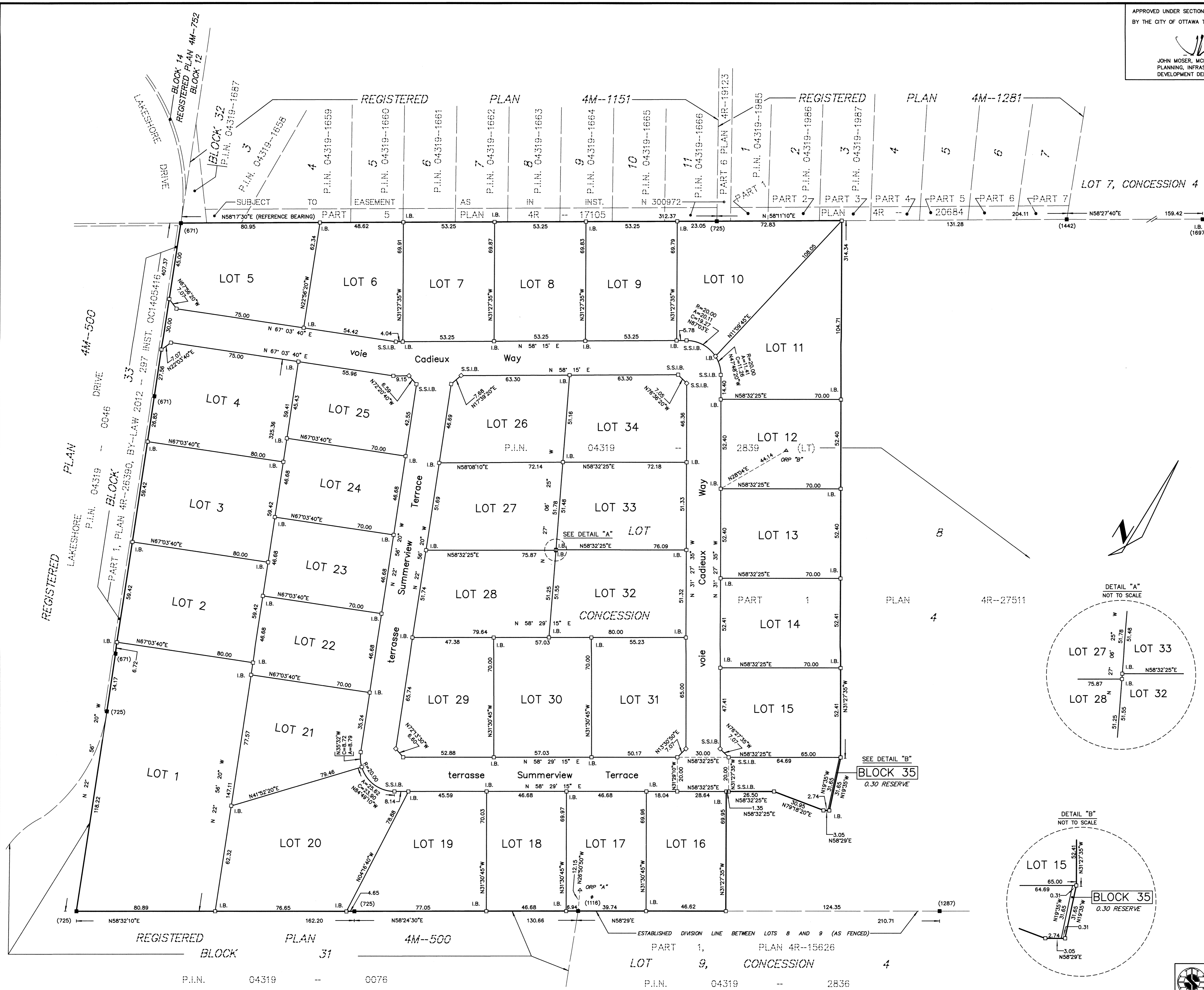
OWNER'S CERTIFICATE

THIS IS TO CERTIFY THAT:

- (1) LOTS 1 TO 34, (BOTH INCLUSIVE), AND RESERVE NAMELY, BLOCK 35
AND THE STREETS, NAMELY voie Cadieux Way AND terrasse Summerview
Terrace HAVE BEEN LAID OUT IN ACCORDANCE WITH MY INSTRUCTIONS.
- (2) THE STREETS ARE DEDICATED AS PUBLIC HIGHWAYS.

DATED THE 19TH DAY OF JULY, 2016

Andrew Cinnamon
ANDREW CINNAMON, PRESIDENT:
LAKELAND MEADOWS LTD. I HAVE THE AUTHORITY TO
BIND THE CORPORATION



ESTABLISHED DIVISION LINE BETWEEN LOTS 8 AND 9 (AS FENCED)

REGISTERED PLAN 4M-500

REGISTERED BLOCK 31

PART 1, PLAN 4R-15626

LOT 9, CONCESSION 4

P.I.N. 04319 -- 0076

P.I.N. 04319 -- 2836